



The Barclays Transitions 6% VC Index



36194Z

PRT 5-23

The Barclays Transitions 6% VC Index™ (the “Index”) seeks to provide investors with consistent exposure to equities and a dynamic combination of commodity and fixed income assets.

The Index aims to provide broad-based exposure to US equities while seeking to stabilize performance throughout each economic cycle by incorporating commodities and longer duration US treasuries.

The index transitions between allocation Trend Scenes based on market conditions using [Dynamic Trend Rotation™](#).

To further control risk, the Index aims to limit its annual volatility to a 6% target using [Barclays’ proprietary intraday volatility forecasting technology](#).

How Does the “Transitions Index” Work?

The Index starts with a fixed-weight, constant allocation of 60% to equities. And, to help manage equity risk, the Index dynamically positions the remaining 40% of the index portfolio to a managed risk portfolio. Here’s how it works...

60% BASE EQUITY PORTFOLIO:

The base equity portfolio is split evenly between:

60% CONSTANT FIXED-WEIGHT EQUITY ALLOCATION	
30% in SPDR S&P 500 ETF (Ticker: SPY)	30% in Investco QQQ Trust Series 1 (Ticker: QQQ)

40% MANAGED RISK PORTFOLIO: Dynamic Trend Rotation™ For Changing Market Cycles

The remaining 40% is allocated into one of the 3 combinations (called “Trend Scenes”) below. The components of the 3 Trend Scenes are:

1. Fixed Income – comprised of an Exchange Traded Fund (“ETF”) that tracks 20+ year U.S. Treasuries (Ticker: TLT)
2. Commodities – the Barclays Commodities Backwardation Index1 (“Commodity Index”)
3. Cash

Each day, the Index seeks to determine whether the performance of Fixed Income and Commodities have been in a positive or negative trend by calculating their Trend Signals2.

Next, the Dynamic Trend Rotation™ process uses the Fixed Income and Commodities Trend Signals to select a Trend Scene for that day.

The selected Trend Scene, in combination with the Equity Allocation, is known as the Base Portfolio of ETFs.

Standard Trend Scene	Flight to Quality Trend Scene	Inflationary Trend Scene
Seeks to enhance index returns during most market cycles with exposure to Fixed Income and Commodities.	Seeks to enhance index returns by increasing exposure to Fixed Income during periods of slowing growth, characterized by decreasing rates and decreasing commodity prices.	Seeks to enhance index returns by decreasing all exposure to bonds and increasing exposure to commodities during inflationary periods, characterized by increasing rates and increasing commodity prices.
30% Allocation 20+ U.S. Treasury Bond ETF (Ticker: TLT)	40% Allocation 20+ U.S. Treasury Bond ETF (Ticker: TLT)	25% Allocation Cash Account
10% Allocation Commodities Index		15% Allocation Commodities Index

(1) The Barclays Backwardation index is a value-oriented index which aims to provide exposure to 10 commodities selected monthly from a universe of 23 Commodities. The methodology for calculating the Commodity Index is based on the observation that historically commodities with low inventories have tended to outperform those with high inventories, and that price-based measures, such as the degree of backwardation in futures prices can be used to identify commodities with relatively lower inventories. Empirical evidence suggests that backwardated curves are associated with low levels of physical inventory. When inventory levels are low, the price for that commodity may be more susceptible to price increases. The Barclays Backwardation Index has been live since November 2010.

(2) Trend Signals for Fixed Income and Commodities are calculated using historical prices for TLT and the Commodities Index. Prices from the most recent three months are given the same weight as all previous data to overweight recent information.

6% Volatility Control With Using Intraday Prices

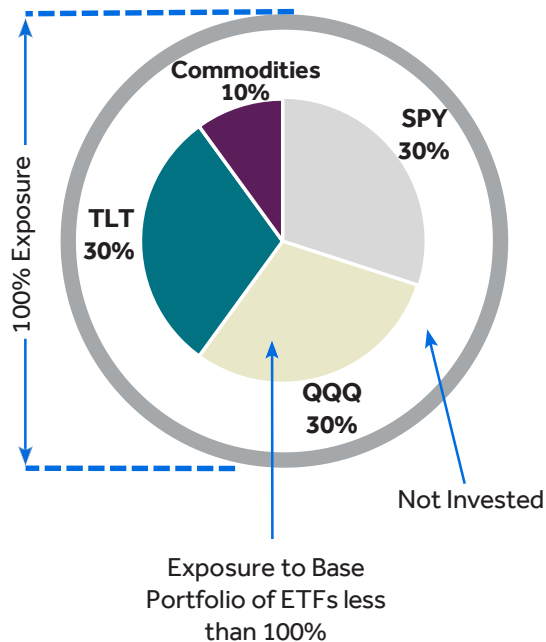
The Index may increase or decrease its exposure to the Base Index between zero and 125% in order to try and maintain volatility at a constant 6% annualized level using Barclays' proprietary intraday volatility forecasting technology ("Barclays' Technology").

Barclays' Technology builds on Academic Research³ which found that intraday volatility measures tend to be more accurate than more typical volatility measures which use closing prices. Researchers explain their finding on the basis that intraday volatility is more informative and can adapt more quickly to changing market environments.

By using intraday volatility measures, Barclays Technology seeks to reduce exposure to the Base Index in turbulent markets faster than other volatility control mechanisms, and increase exposure more rapidly when markets return to normal.

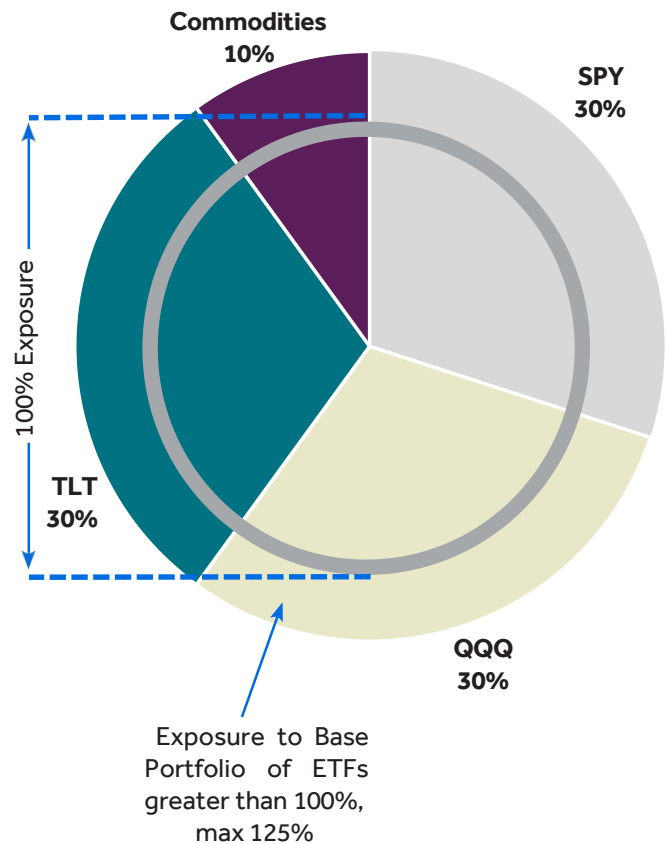
If the recent volatility of the Base Index exceeds the target volatility, the index may allocate less than 100% exposure to the Base Index.

Less than 100% Exposure to the Base Index



If the recent volatility of the Base Index is below the target volatility, the exposure allocated to the Base Index may exceed 100% and can be up to 125%.

>100% Exposure to the Base Index

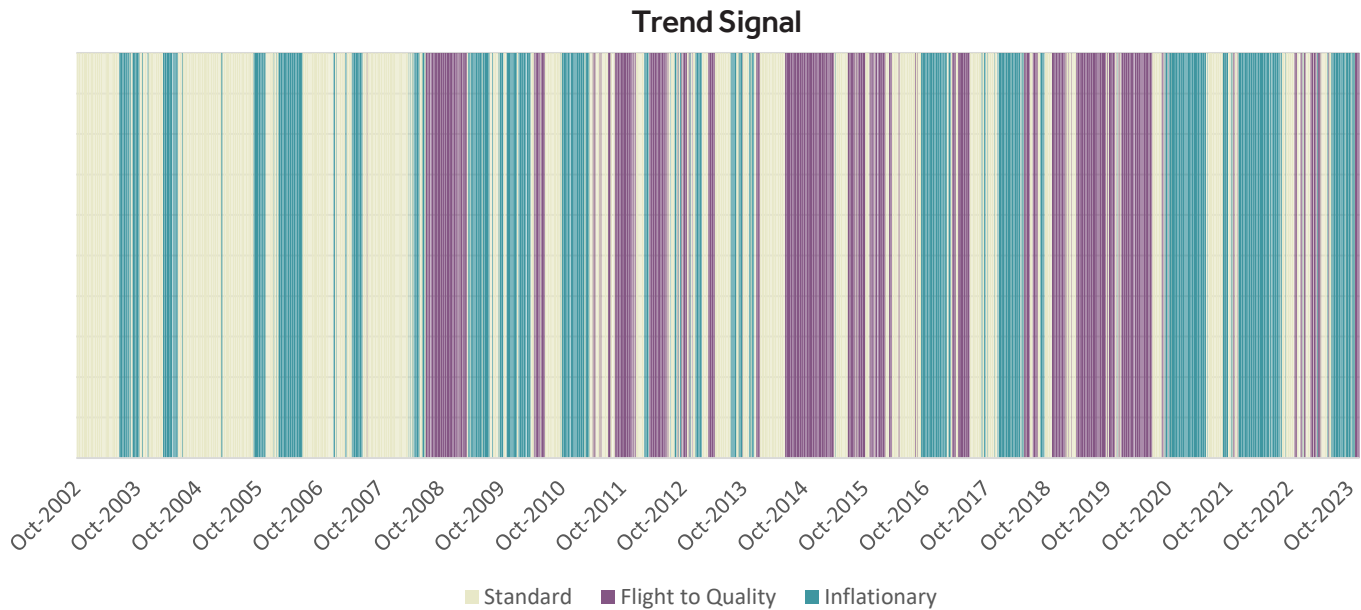


For illustration purposes only; may not reflect actual weights or allocations.

³ "Drift Independent Volatility Estimation Based on High, Low, Open and Close Prices" by D. Yang and Q. Zhang (Journal of Business, 2000) <https://www.jstor.org/stable/10.1086/209650>

How Does Dynamic Trend Rotation™ Work?

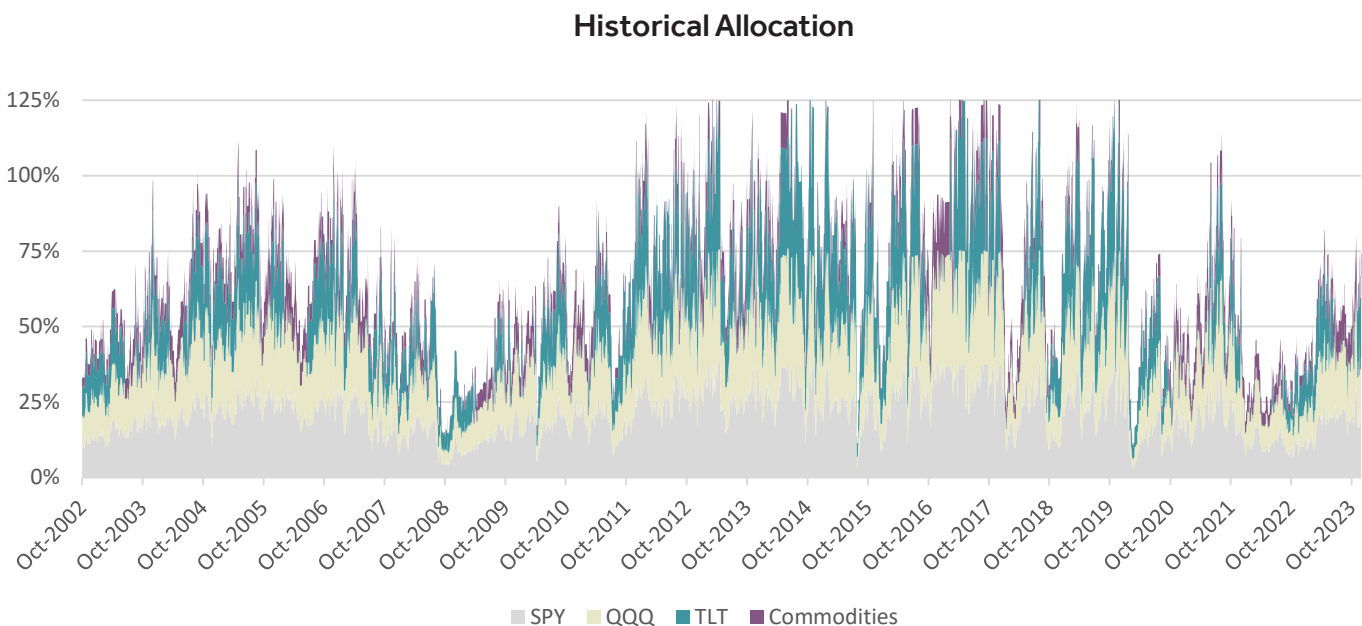
The graph below depicts the rotation of the Trend Scenes over time in response to changes in commodity and fixed income Trend Signals.



Source: Barclays, Bloomberg, as of December 31, 2023. Simulated period: Index Base date is October 31, 2002 ; Index Live Date is March 31, 2023. Past and/or simulated past performance are not reliable indicators of future performance. See information on the performance data in the Index performance disclaimer at end for further information.

The graph illustrates that although the Base Index exposure to equities is a constant 60%, exposure of the Index to equities can fluctuate materially as the index seeks to stabilize performance by maintaining a 6% annual volatility.

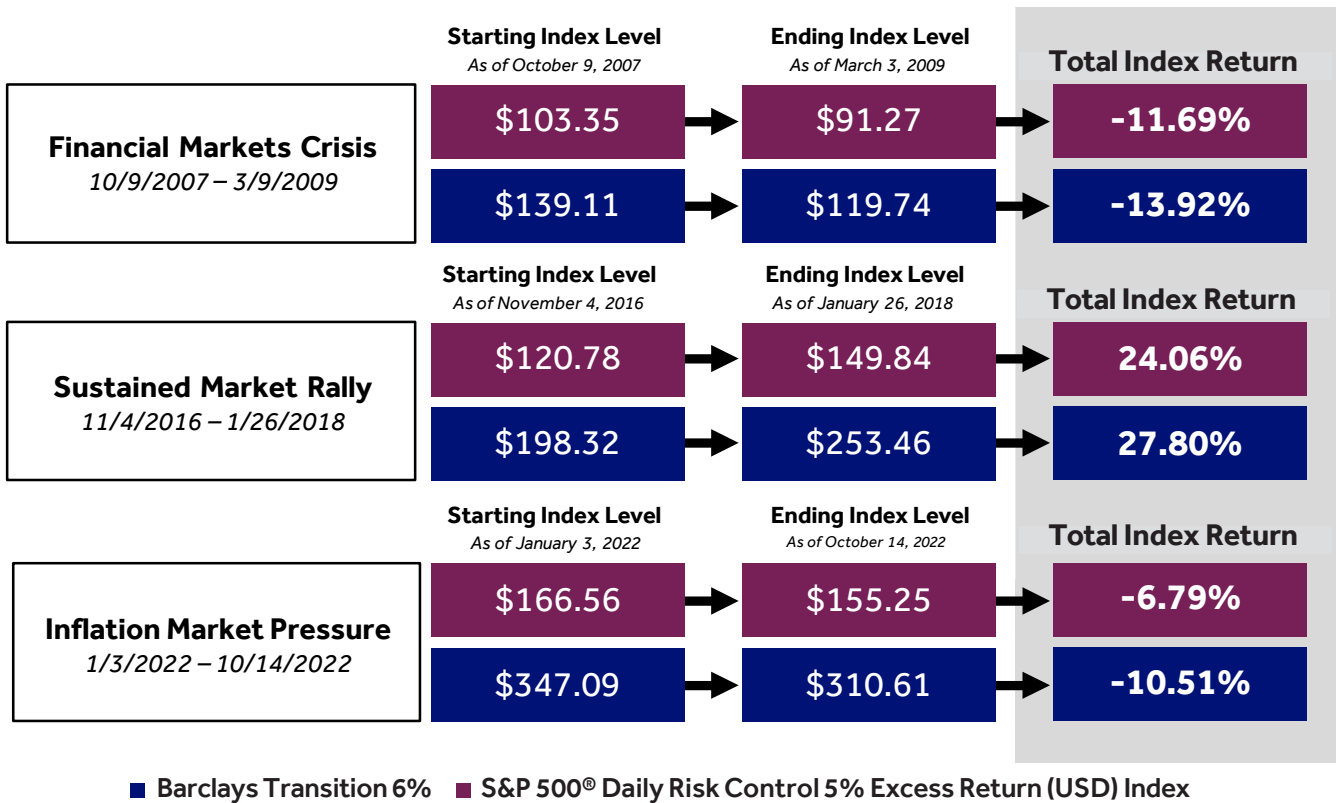
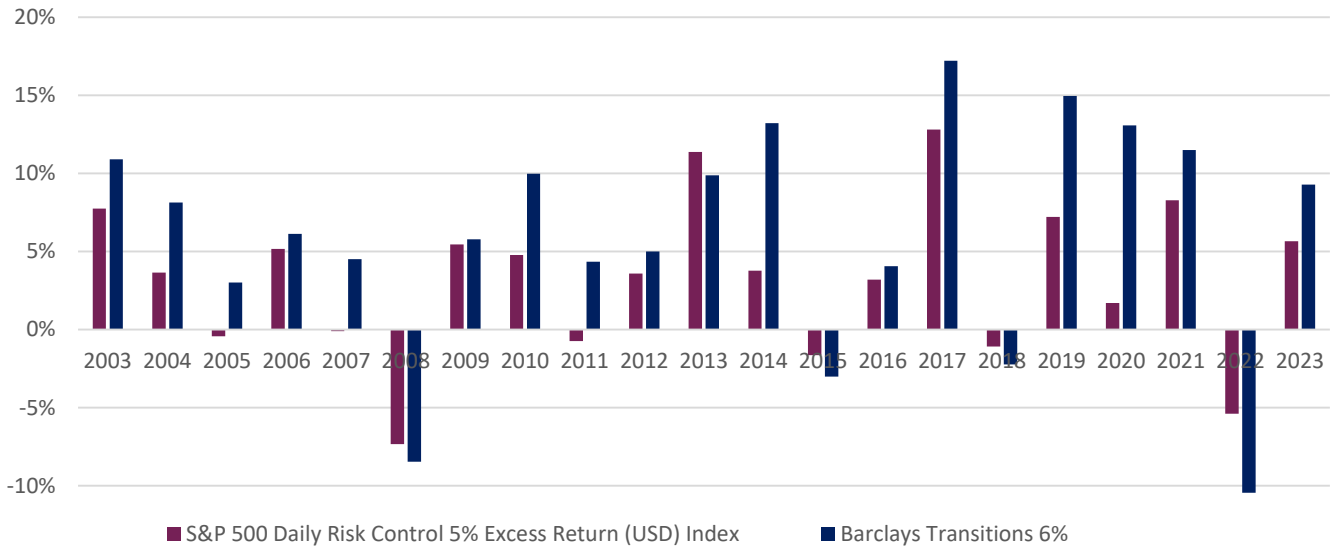
This graph also shows the rotation of fixed income and commodities in and out of the Index as the Trend Scenes change as part of the daily **Dynamic Trend Rotation™** process.



Source: Barclays, Bloomberg, as of December 31, 2023. Simulated period: Index Base date is October 31, 2002; Index Live Date is March 31, 2023. Past and/or simulated past performance are not reliable indicators of future performance. See information on the performance data in the Index performance disclaimer at end for further information.

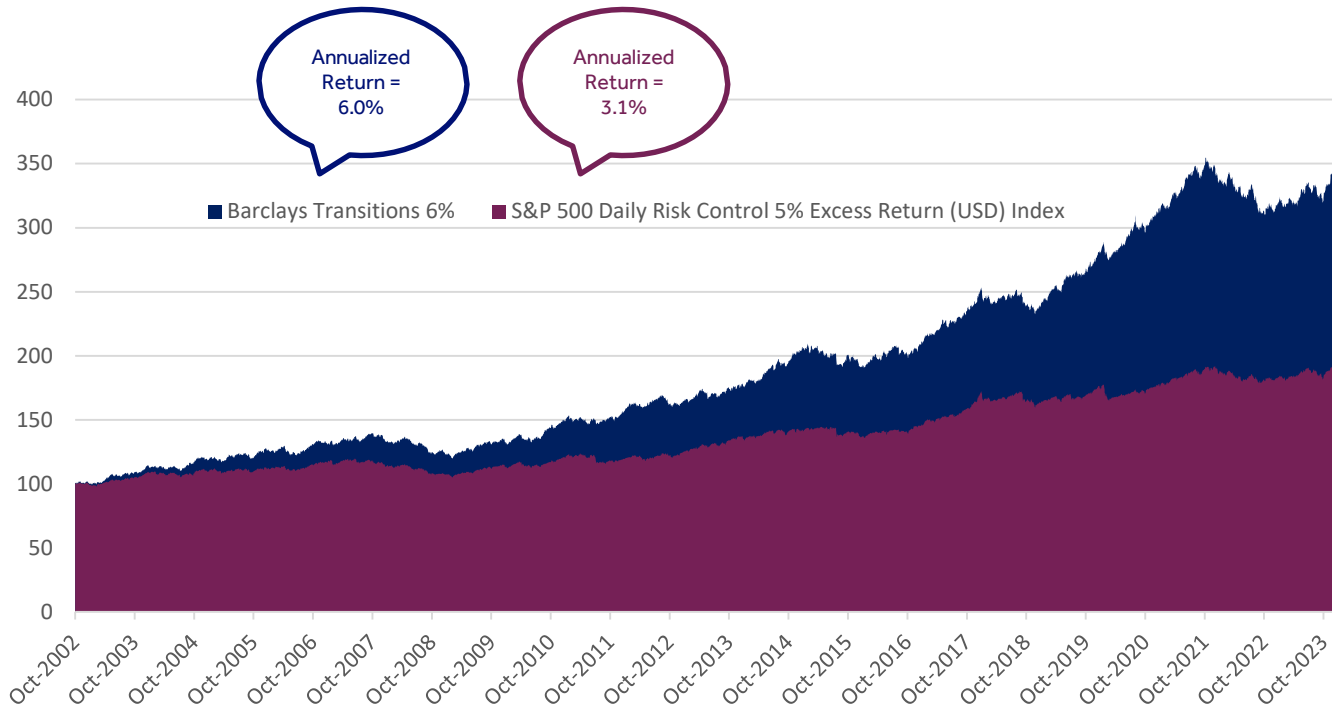
Market Cycles With Dynamic Trend Rotation™

This bar chart shows the historical performance of the S&P 500® Daily Risk Control 5% Excess Return and the Barclays Transitions 6% VC Index™ Index over the last 20 years during a variety of market cycles. It illustrates that the Index, which uses Dynamic Scene Rotation™ and Barclays proprietary intraday forecasting volatility technology, both tends to outperform the S&P 500® Daily Risk Control 5% Excess Return during periods when broad-based equity returns are negative, and tends to perform well during periods when broad-based equity returns are positive.



Source: Barclays, Bloomberg, as of December 31, 2023. Simulated period: Index Base date is October 31, 2002; Index Live Date is March 31, 2023. Past and/or simulated past performance are not reliable indicators of future performance. See information on the performance data in the Index performance disclaimer at end for further information.

Comparative Performance Statistics



S&P 500® Index Daily Risk Control 5% <i>10/31/2002–12/31/2023</i>		
Total 10–Year Returns		
Minimum	Maximum	Average
19.7%	64.1%	39.5%
Average Annual Returns		
Minimum	Maximum	Average
1.8%	5.1%	3.3%

Transitions 6 Index <i>10/31/2002–12/31/2023</i>		
Total 10–Year Returns		
Minimum	Maximum	Average
49.7%	136.1%	84.2%
Average Annual Returns		
Minimum	Maximum	Average
4.1%	9.0%	6.2%

Source: Barclays, Bloomberg, as of December 31, 2023. Simulated period: Index Base date is October 31, 2022; Index Live Date is March 31, 2023. Past and/or simulated past performance are not reliable indicators of future performance. See information on the performance data in the Index performance disclaimer at end for further information.

Costs, Deductions and Risk Factors

An investment in Barclays Transitions 6% VC Index™ also involves fees, costs and risks. The following is a summary of these fees and costs and certain risks associated with the Index. You should consider the following, and consult with your advisers and read any product documentation carefully, before investing in any financial product based on the performance of the Index.

- The Index reinvests all dividends paid with the ETF components and makes the following deductions from the Index level: (1) a fixed decrement of 0.50% per year, representing a synthetic dividend, which is deducted from the Index level on a daily basis (2) a financing cost of 0.45% per year plus the prevailing Fed Funds rate on the notional exposure of the Index to the ETF components and 0.50% on the notional exposure of the Index to the commodity component, each of which is deducted from the Index level on a daily basis and (3) a rebalancing cost of 0.02% on the ETF components and 0.05% on the commodity component, each of which applies to the change in notional exposure to the relevant component as a result of portfolio rebalancing and is deducted from the Index level each time the Index rebalances. These deductions will be reflected in the calculation of the daily Index level and will reduce performance of the Index. Because the Index is exposed to Fixed Income, it may underperform in a rapidly rising interest rate environment.
- While commodities have historically outperformed equities as inflation rises, the correlation to equities may be unstable and imperfect.
- The volatility control mechanism may not achieve its intended goal, and the Index may not achieve its target volatility of 6%. In addition, the Index may assign up to 125% of total exposure to its underlying index components. When the Index's exposure to its underlying index components is greater than 100%, any negative performance of its underlying index components will be magnified and the level of the Index may decrease significantly.
- The Index Methodology may be ineffective in allocating exposure. There can be no assurance that the relevant "Scene" selected following the application of Trend Signals on a Rebalance Business Day will outperform "Scenes" which were not selected.
- Any weight in the portfolio which is not invested will earn no return. In addition, if the volatility control mechanism causes exposure to the Index Portfolio to be less than 100%, the difference will not be invested and will earn no return.



Index Performance Disclaimer

This communication includes past performance data related to select indices developed and published by Barclays Bank PLC ("Barclays"). This disclaimer is intended to highlight the risks inherent in assessing such performance data.

Index performance data included in this communication are accompanied by a footnote specifying the relevant Index Base Date and Index Live Date. The Index Base Date is defined as the first date for which the level of the index has been calculated. The Index Live Date is defined as the date on which the index rules were established and the index was first published. In assessing past performance, it is important to distinguish Past simulated index performance from Past index performance:

Past simulated index performance

Past simulated index performance refers to the period from the Index Base Date to the Index Live Date. This performance is hypothetical and back-tested using criteria applied retroactively. It benefits from hindsight and knowledge of factors that may have favorably affected the performance and cannot account for all financial risk that may affect the actual performance of the index. It is in Barclays' interest to demonstrate favorable simulated index performance. The actual performance of the index may vary significantly from the past simulated performance. Past simulated index performance is not a reliable indicator of future performance.

Past index performance

Past index performance refers to the period from the Index Live Date to the date of this presentation. This performance is actual past performance of the index. Past index performance is not a reliable indicator of future performance.

Past index performance is usually highlighted in blue and designated as "Live". Past simulated index performance is usually not highlighted.

Past and/or Past simulated index performance is provided for a period of at least 10 years, unless the instruments underlying the index were only available or sufficiently liquid for a lesser period. In that case, Past and Past simulated index performance is provided from the time when the instruments underlying the index were available or sufficiently liquid. Unless stated otherwise, performance, volatility, Sharpe ratio and correlation data are calculated using monthly returns and maximum drawdown data are calculated using daily returns. For the purpose of regulatory compliance and to facilitate comparison, performance data include returns calculated for each of the five consecutive 12-month periods extending back from month-end of last month. However, Barclays has provided additional information to supplement statutory and/or regulatory requirements.

The index methodology is available for review upon request, subject to the execution of a non-disclosure agreement.

The performance data reflect all costs, charges and fees that are incorporated into the index formula (if any). Depending on the transaction/product terms, additional charges may apply as part of the transaction/product; such charges are not reflected in the performance statistics.

Barclays or an affiliate of Barclays prepared the provided performance information (including the simulated performance information), may be the index sponsor and potentially is the counterparty to a transaction referencing the index.

North American Life Insurance Company for Life and Health Insurance Disclaimer

Neither Barclays Bank PLC ("BB PLC") nor any of its affiliates (collectively, "Barclays") is the issuer or producer of fixed index annuities and Barclays has no responsibilities, obligations or duties to policyholders in fixed index annuities. The Barclays Transitions 12 VC Index™ and the Barclays Transitions 6 VC Index™ (the "Indexes"), together with any Barclays indices that are components of the Index is licensed for use by North American Company for Life and Health Insurance® ("NACOLAH") as the issuer or producer of fixed index annuities (the "Issuer"). Barclays' only relationship with the Issuer in respect of the Index is the licensing of the Index, which is administered, compiled and published by BB PLC in its role as the index sponsor (the "Index Sponsor") without regard to the Issuer or the fixed index annuities or policyholders in the fixed index annuities. Additionally, the Issuer may for itself execute transaction(s) with Barclays in or relating to the Index in connection with fixed index annuities. Policyholders acquire fixed index annuities from the Issuer and policyholders neither acquire any interest in the Index nor enter into any relationship of any kind whatsoever with Barclays upon making a purchase in fixed index annuities. Fixed index annuities are not sponsored, endorsed, sold or promoted by Barclays and Barclays makes no representation regarding the advisability of the fixed index annuities or use of the Index or any data included therein. Barclays shall not be liable in any way to the Issuer, policyholders or to other third parties in respect of the use or accuracy of the Index or any data included therein.

Disclaimer

Dynamic Trend Rotation™ is a trademark of Enhance Design Group, LLC and has been licensed for use by Barclays Bank PLC. Barclays Bank PLC is the owner of the intellectual property and licensing rights relating to the Index. The Index is operated by Barclays Index Administration, an independent index administration function within Barclays Bank PLC. Barclays Bank PLC may terminate the appointment of, and replace, the Index Sponsor with a successor index sponsor. Following the termination of the appointment of the Index Sponsor, Barclays Bank PLC will publish an announcement of that termination and the identity of the successor index sponsor on indices.cib.barclays (or any successor website) as soon as reasonably practicable.

Barclays does not guarantee the accuracy and/or completeness of any index described herein (each an "Index") any data included therein, or any data from which it is based, and Barclays shall not have any liability for any errors, omissions, or interruptions therein. Barclays does not make any warranty, express or implied, as to the results to be obtained from the use of an Index. Barclays expressly disclaims all warranties of merchantability or fitness for a particular purpose or use with respect to an Index or any data included therein. Without limiting any of the foregoing, in no event shall Barclays have liability for any special, punitive, indirect or consequential damages, lost profits, loss of opportunity or other financial loss, even if notified of the possibility of such damages.

None of Barclays, any of its affiliates or subsidiaries nor any of its directors, officers, employees, representatives, delegates or agents shall have any responsibility to any person (whether as a result of negligence or otherwise) for any determination made or anything done (or omitted to be determined or done) in respect of an Index or publication of the levels of the Index and any use to which any person may put the Index or the levels of the Index. In addition, although Barclays reserves the right to make adjustments to correct previously incorrectly published information, including but not limited to the levels of the Index, Barclays is under no obligation to do so and Barclays shall have no liability in respect of any errors or omissions.

Nothing in any of the disclaimers set forth above will exclude or limit liability to the extent such exclusion or limitation is not permitted by law.

© Barclays Bank PLC 2024. All rights reserved.

NYKC083260A - 4/23



36194Z

PRT 5-23